

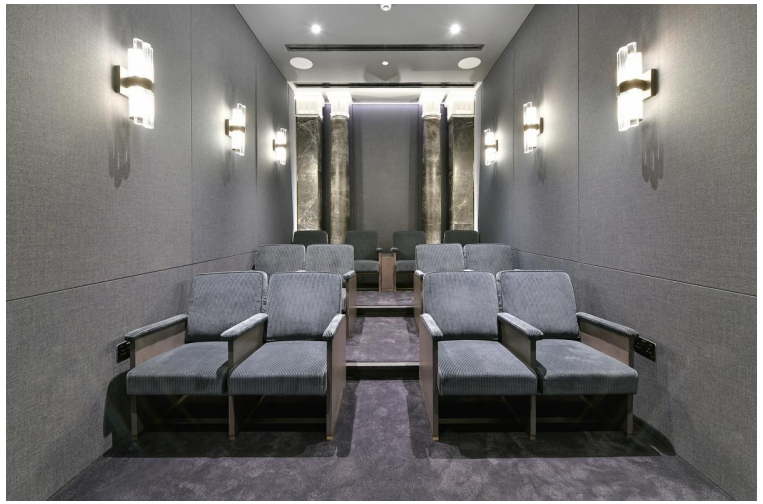
## Little Portland Street, London W1W

Price £1,500 per week - Furnished









## Description

Situated within an exceptional Crown Estate development in the heart of the West End, this exquisite two-bedroom apartment represents the pinnacle of luxury London living. The property forms part of an exclusive collection of just 44 luxury apartments, each meticulously interior-designed to create sophisticated living spaces that blend contemporary elegance with timeless appeal. The furnished accommodation showcases premium finishes and thoughtful design details throughout, creating an atmosphere of refined comfort and style.

The apartment benefits from generous proportions across its well-planned layout, with two bathrooms providing added convenience and privacy. The interior design scheme has been carefully curated to maximise both functionality and aesthetic appeal, ensuring every element contributes to the overall sense of luxury and sophistication.

Residents enjoy access to an impressive array of premium amenities including a private cinema room for entertainment, an elegant residents lounge perfect for relaxation or informal meetings, secure bicycle storage, and the reassurance of 24-hour concierge service. These facilities create a hotel-like living experience while maintaining the privacy and comfort of a luxury residential setting.

The location places residents at the very centre of London's cultural and commercial heart, with Charlotte Street's world-renowned dining scene, Regent Street's flagship stores, and the West End's legendary theatres all within walking distance. This prime Fitzrovia address offers unparalleled access to the finest experiences London has to offer, from Michelin-starred restaurants to exclusive boutiques and cultural venues.

Transport connections are exceptional, with multiple Underground stations nearby providing swift access across London, making this the perfect base for both work and leisure in the capital.

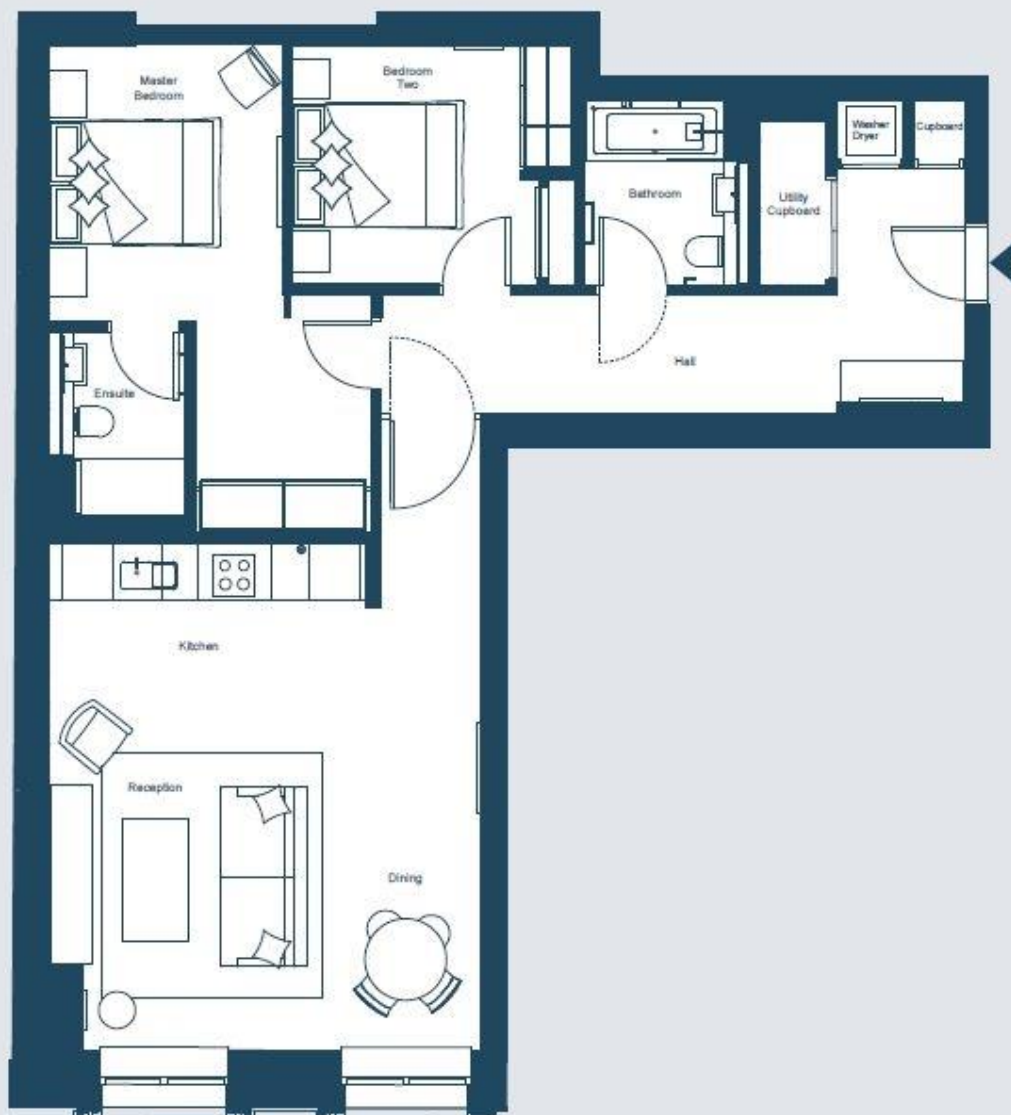
This property offers an unrivalled opportunity to experience luxury West End living within one of London's most prestigious new developments, combining Crown Estate heritage with contemporary luxury amenities.

Council tax band: G. Rent is payable on a monthly basis and you may be required to pay more than a month's rent in advance, depending on your circumstances. You will be required to pay a 1 week holding deposit following a successful offer. Tenancies with annual rents up to £50,000 will require a 5 weeks' security deposit, while those exceeding this threshold will require a 6 weeks' deposit. Utility bills, council tax, telephone line and broadband are not included in the rent. As well as paying the rent, you may also be required to make some additional permitted payments. If your tenancy does not qualify as an AST, additional fees may apply. Please visit [jll.co.uk/fees](http://jll.co.uk/fees) for details of fees that may be payable when renting a property. To check broadband and mobile phone coverage please visit Ofcom here [ofcom.org.uk/phones-telecoms-and-internet/advice-for-consumers/advice/ofcom-checker](http://ofcom.org.uk/phones-telecoms-and-internet/advice-for-consumers/advice/ofcom-checker)

- Crown Estate development
- Interior designed accommodation
- Cinema room access
- Residents lounge facility
- Twenty-four hour concierge
- Bicycle storage provided
- Heart of West End
- Luxury apartment building
- Premium dining nearby
- Exceptional retail access

# Floorplan

944 sq ft | 88 sq m



Total Area  
87.7 Sq m  
944.3 Sq ft



Mayfair and Marylebone  
St George Street,  
London W1S 2FQ  
+44 207 399 5550  
[mayfair@jll.com](mailto:mayfair@jll.com)

*Urban living, your way.*

[jll.co.uk/residential](http://jll.co.uk/residential)

© 2019 Jones Lang LaSalle IP, Inc. All rights reserved. All information contained herein is from sources deemed reliable; however, no representation or warranty is made to the accuracy thereof.

