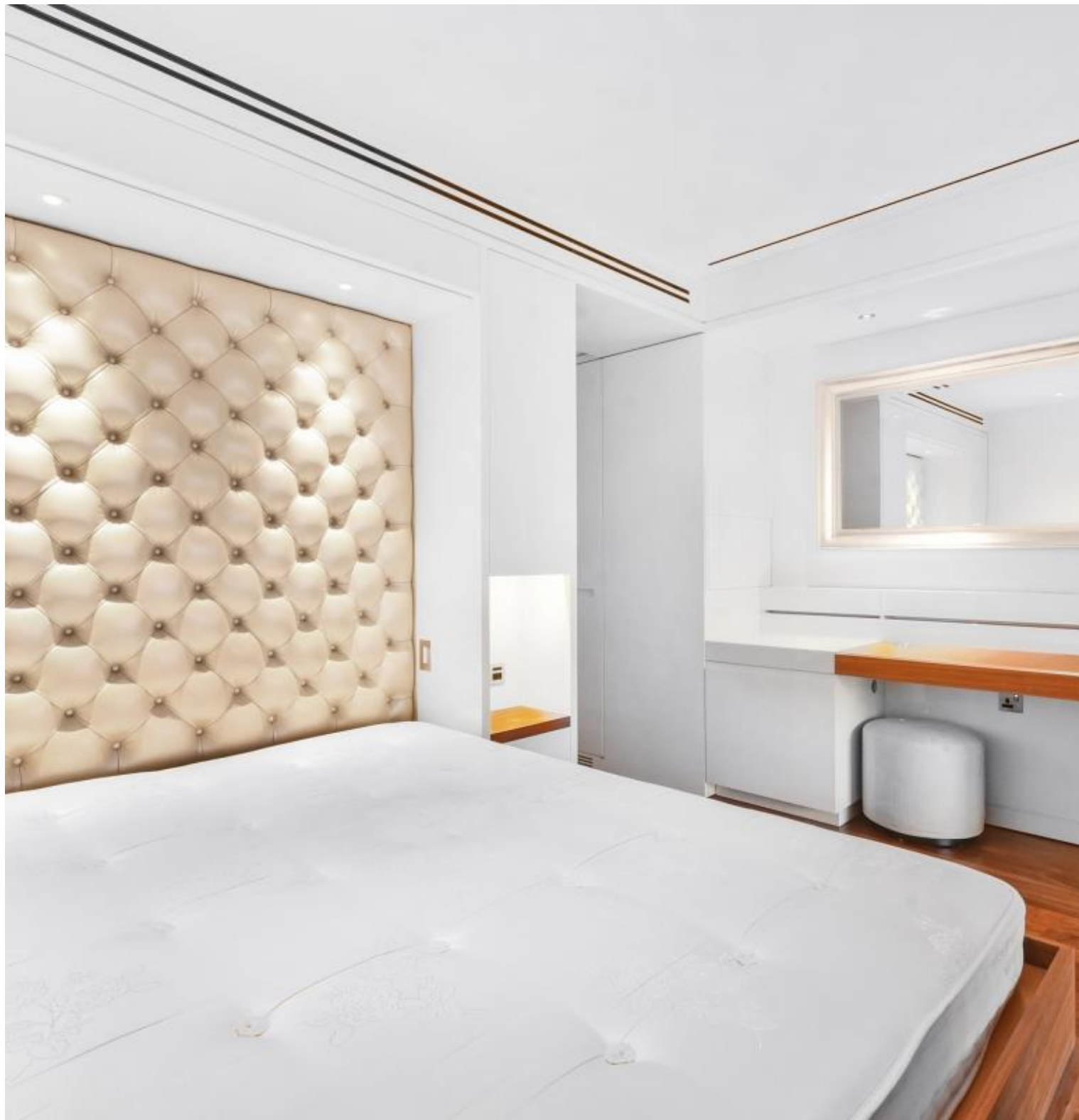




## Moor Lane, London EC2Y

Price £610 per week - Furnished









## Description

A luxury Galley Suite on the 17th floor of the prestigious Heron development, located in the heart of the City of London and within easy reach of stations such as Bank, Moorgate, Barbican, Old Street, Liverpool Street, St. Pauls, Farringdon, Mansion House and Cannon Street.

This apartment offers a good sized reception area with West facing balcony, partitioned sleeping area with a desk / working space, open plan kitchen fully fitted with Miele appliances, Walnut wooden flooring throughout and luxury shower room with pearlised mosaic walls. The property has a high specification with comfort cooling, iPod docking system, ceiling speakers and central control panel. The development also benefits from an on-site gym, exclusive resident's club, 24 hour security and concierge. Offered fully furnished.

We understand that heating, hot water and cooling is delivered via a communal system for which separate charges apply.

Council tax band: E. Rent is payable on a monthly basis and you may be required to pay more than a month's rent in advance, depending on your circumstances. You will be required to pay a 1 week holding deposit following a successful offer. Tenancies with annual rents up to £50,000 will require a 5 weeks' security deposit, while those exceeding this threshold will require a 6 weeks' deposit. Utility bills, council tax, telephone line and broadband are not included in the rent. As well as paying the rent, you may also be required to make some additional permitted payments. If your tenancy does not qualify as an AST, additional fees may apply. Please visit [jll.co.uk/fees](http://jll.co.uk/fees) for details of fees that may be payable when renting a property. To check broadband and mobile phone coverage please visit Ofcom here [ofcom.org.uk/phones-telecoms-and-internet/advice-for-consumers/advice/ofcom-checker](http://ofcom.org.uk/phones-telecoms-and-internet/advice-for-consumers/advice/ofcom-checker)

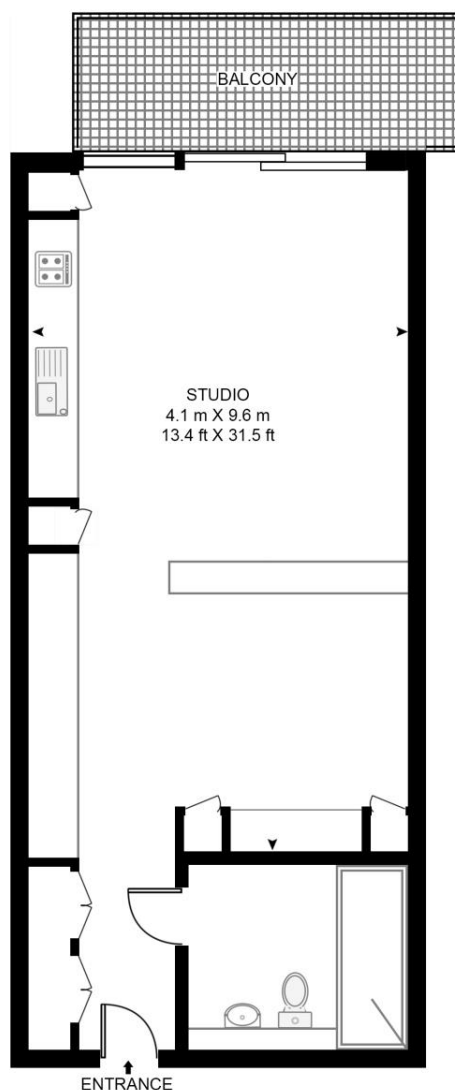
- Studio
- 1 Bathroom
- 17th Floor
- West-facing Balcony
- Walnut Flooring
- Comfort Cooling
- 24 hour concierge
- 0.2 miles to Moorgate Station
- Approx. 426 sq ft (39.6 sq m)
- EPC: C

# Floorplan

426 sq ft | 40 sq m

## THE HERON, MOOR LANE

APPROXIMATE GROSS INTERNAL FLOOR AREA 426 SQ.FT (39.6 SQ.M)



### SEVENTEENTH FLOOR



This floor plan has been defined by the RICS Code of Measurement. This floor plan and all others are for approximate representative purposes only and upon usage is agreed to as such by the client.

WWW: [hdvirtualart.com](http://hdvirtualart.com) | TEL: 0203.974.1567 | EMAIL: [info@hdvirtualart.com](mailto:info@hdvirtualart.com)

City  
25 Walbrook The Walbrook  
Building,  
London EC4N 8AF  
+4420 7337 4000

*Urban living, your way.*

[jll.co.uk/residential](http://jll.co.uk/residential)

© 2019 Jones Lang LaSalle IP, Inc. All rights reserved. All information contained herein is from sources deemed reliable; however, no representation or warranty is made to the accuracy thereof.

