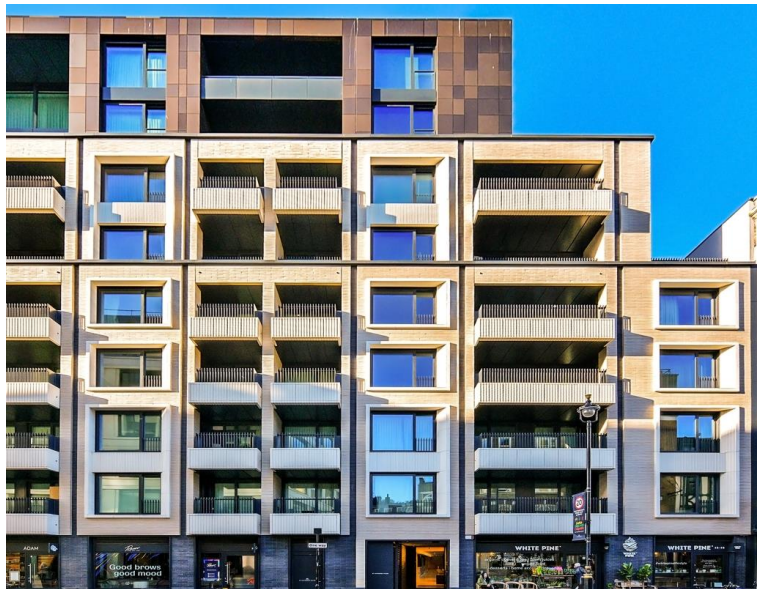


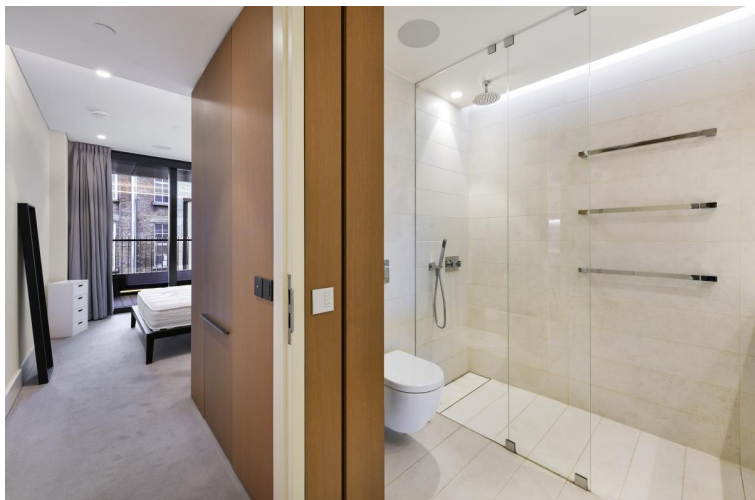
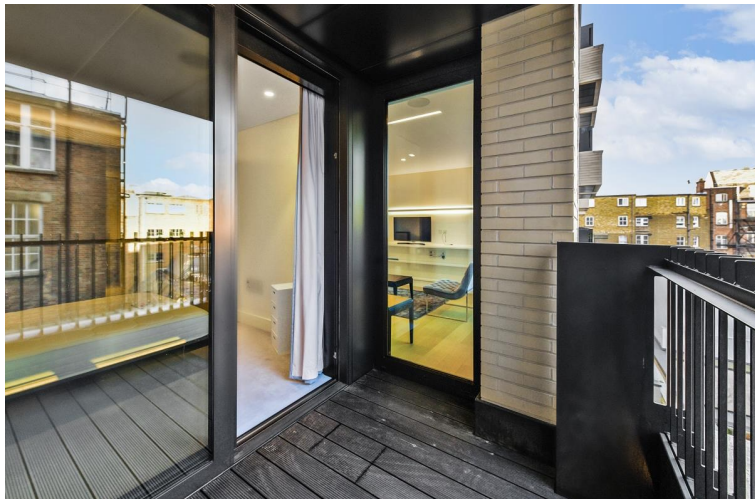


Rathbone Place, London W1T

Price £1,150 per week - Furnished, Part
Furnished







Description

The apartment is set on the 4th floor and offers spacious open plan living a fully fitted kitchen with dining area which leads through to the reception area with access to the private balcony which is also accessible from the bedroom. The bedroom suite has built-in storage and a large en-suite with a double sink and walk-in shower. The apartment is furnished and has wooden flooring throughout with carpet in the bedroom for extra comfort.

Residents have access to a 24-hour concierge, gym, swimming pool, sauna and steam room, beautiful gardens, residents' lounge, wine storage and tasting room, screening room, Moments from Oxford Street and located in the heart of London's West End, Rathbone Square is ideal for transport links in and around London with The City and West London being just 10 minutes away via the underground.

We understand that cooling / heating is delivered via a communal system for which separate charges apply.

Council tax band: E. Rent is payable on a monthly basis and you may be required to pay more than a month's rent in advance, depending on your circumstances. You will be required to pay a 1 week holding deposit following a successful offer. Tenancies with annual rents up to £50,000 will require a 5 weeks' security deposit, while those exceeding this threshold will require a 6 weeks' deposit. Utility bills, council tax, telephone line and broadband are not included in the rent. As well as paying the rent, you may also be required to make some additional permitted payments. If your tenancy does not qualify as an AST, additional fees may apply. Please visit jll.co.uk/fees for details of fees that may be payable when renting a property. To check broadband and mobile phone coverage please visit Ofcom here ofcom.org.uk/phones-telecoms-and-internet/advice-for-consumers/advice/ofcom-checker

- Modern Apartment
- 24 Hour Concierge
- Open Plan Kitchen
- Balcony
- Residents Gym
- Swimming Pool
- Sauna & steam Room
- Approx. 581 sq ft (53 sq m)
- Council Tax Band E

Floorplan

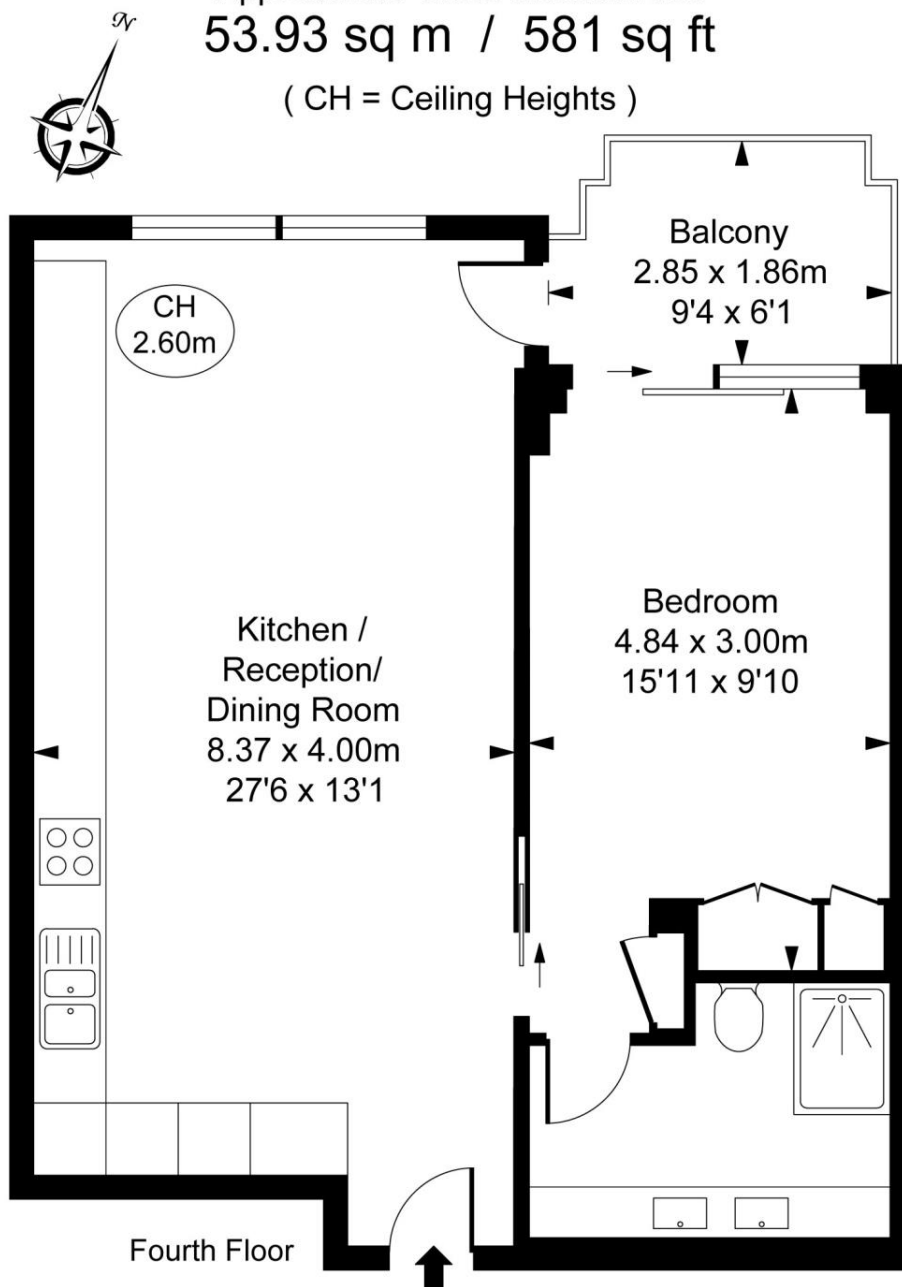
581 sq ft | 54 sq m

Rathbone Place, W1T

Approximate Gross Internal Area

53.93 sq m / 581 sq ft

(CH = Ceiling Heights)



This plan is not to scale. It is for guidance and not for valuation purposes.
All measurements and areas are approximate only, and have been prepared in accordance with the current edition of the RICS Code of Measuring Practice.
© Fulham Performance

Mayfair and Marylebone
St George Street,
London W1S 2FQ
+44 207 399 5550
mayfair@jll.com

Urban living, your way.

jll.co.uk/residential

© 2019 Jones Lang LaSalle IP, Inc. All rights reserved. All information contained herein is from sources deemed reliable; however, no representation or warranty is made to the accuracy thereof.

