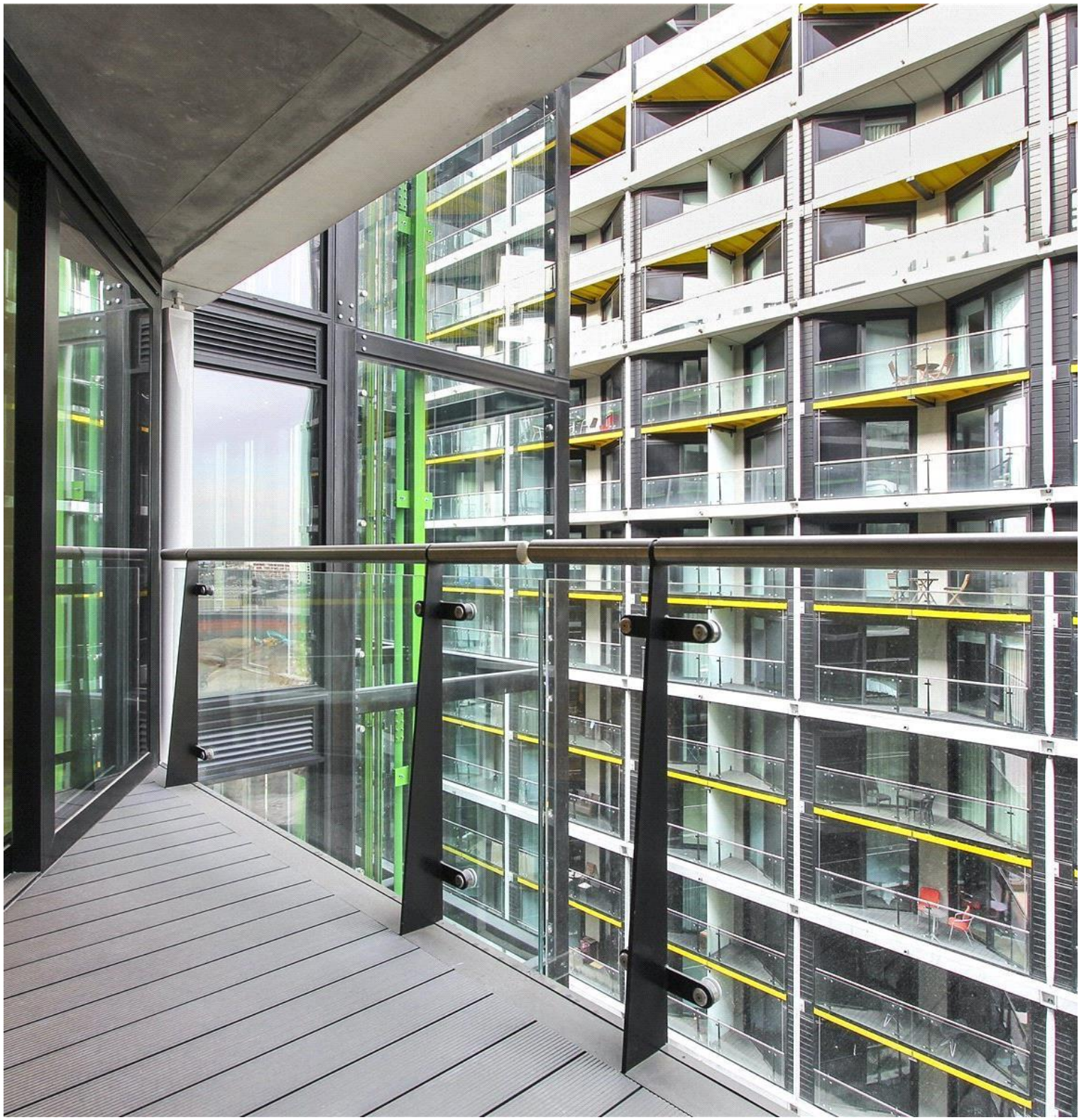


Riverlight Quay, London SW8

Guide price £650,000 Leasehold







Description

A beautifully presented one bedroom apartment in ultra modern Riverside development near Vauxhall.

This eighth floor apartment comprises of one double bedroom with large fitted wardrobes, open plan kitchen reception room, luxury bathroom and balcony.

Residents benefit from gym, swimming pool, spa, lounge, 24 hour concierge and shuttle bus to Vauxhall.

Riverlight Quay has an enviable position on the south bank of the River Thames close to Kensington and Chelsea.

Nearby Battersea Park and Queenstown Road overground stations run regular trains to Victoria and Waterloo. Vauxhall overground and tube station provide further access to the London rail and tube network. Nine Elms is ideally located for links via the A3 to the South and South East of England and within easy reach of the M3 and M4 to the South and South West of England. Both Heathrow and Gatwick Airports are conveniently located at 17 miles and 20 miles away respectively for internal and international travel

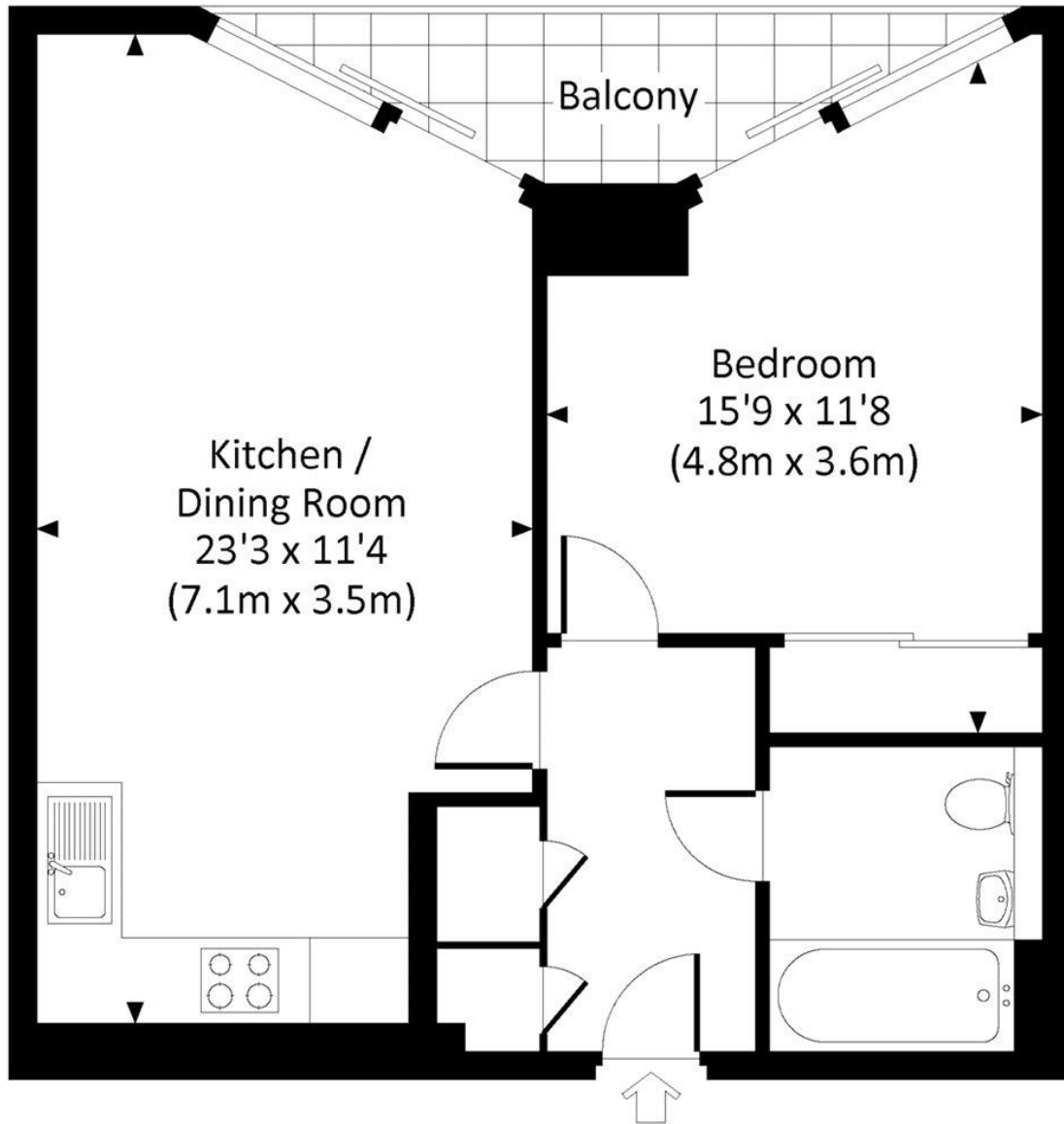
- ONE BEDROOM
- EIGHTH FLOOR
- BALCONY
- SWIMMING POOL
- 24 HOUR CONCIERGE
- EPC: B (85)

Floorplan

506 sq ft | 47 sq m

RIVERLIGHT QUAY, SW8

Approx. gross internal area
506 Sq Ft. / 47.0 Sq M.



EIGHTH FLOOR



All measurements have been made in accordance with RICS Code of Measuring Practice which are approximate only and only for illustrative purposes. For the avoidance of doubt, Dowling Jones Design shall not be liable for any reliance on these measurements. © 2016 www.dowlingjones.com 020 7610 9933

Nine Elms
4 Riverlight Quay,
London SW11 8DG
020 3147 1333

Urban living, your way.

jll.co.uk/residential

© 2019 Jones Lang LaSalle IP, Inc. All rights reserved. All information contained herein is from sources deemed reliable; however, no representation or warranty is made to the accuracy thereof.

