



London SW11
Guide Price £1,100,000 Leasehold







Description

A stunning second floor apartment with direct river views in this new development on the banks of the River Thames. The property consists of master bedroom with balcony and en suite shower room, second double bedroom, one bathroom, reception room with glass doors leading to a terrace and a fully fitted, open plan kitchen. Riverlight features an exclusive residents' clubhouse with heated swimming pool, Jacuzzi, sauna and steam room as well as a well equipped mezzanine river view gymnasium. There is also a reception lounge and library, 24 hour concierge and a shuttle bus to the transport services of Vauxhall.

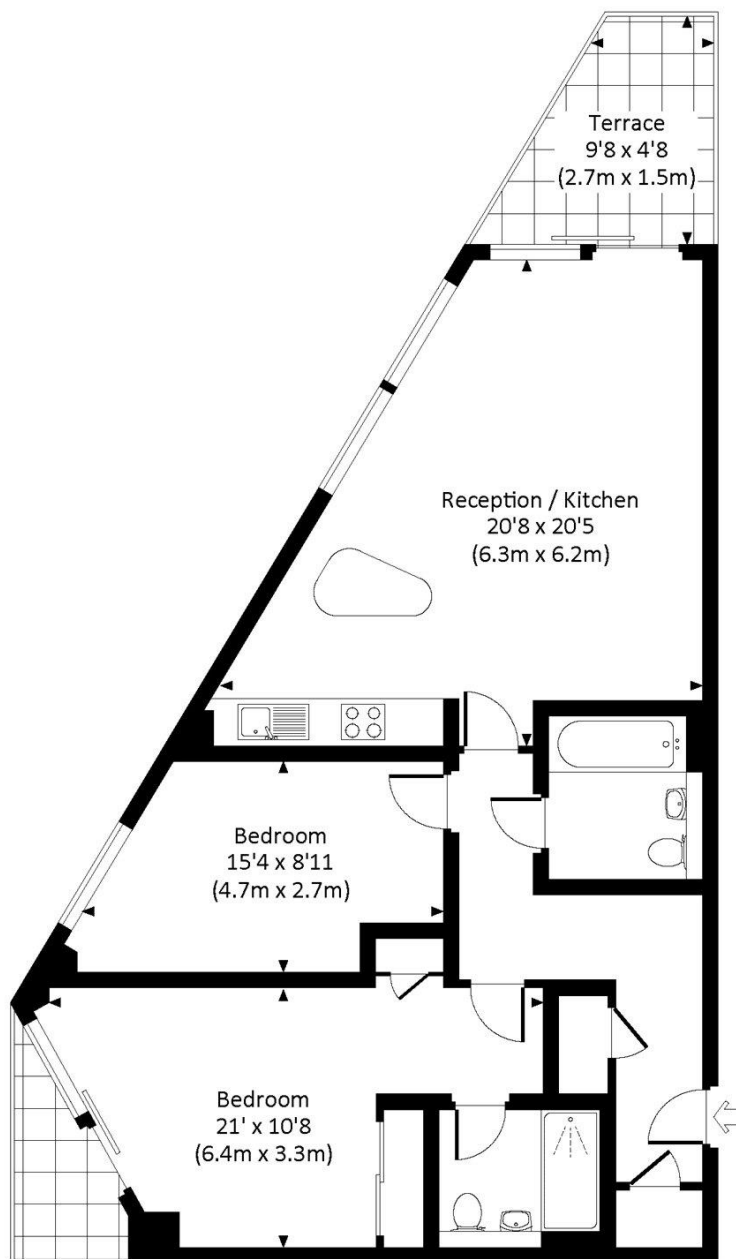
- 2 Bedrooms
- 2 Bathrooms
- Direct river views
- Balcony
- Gym, pool, jacuzzi, sauna & steam room
- Nine Elms
- Approx. 867 sq ft (80.5 sq m)
- Leasehold
- EPC: B

Floorplan

867 sq ft | 80.5 sq m

RIVERLIGHT QUAY, SW8

Approx. gross internal area
867 Sq Ft. / 80.5 Sq M.



SECOND FLOOR



All measurements have been made in accordance with RICS Code of Measuring Practice which are approximate only and only for illustrative purposes. For the avoidance of doubt, Dowling Jones Design shall not be liable for any reliance on these measurements. © 2016 www.dowlingjones.com 020 7610 9933

Nine Elms
4 Riverlight Quay,
[brAddL2]
020 3147 1333

Urban living, your way.

jll.co.uk/residential

© 2019 Jones Lang LaSalle IP, Inc. All rights reserved. All information contained herein is from sources deemed reliable; however, no representation or warranty is made to the accuracy thereof.

