



Hutchings Street, London E14

Guide price £899,000 Leasehold





Description

A stunning 17th floor two bedroom, two bathroom penthouse with far reaching panoramic river views and secure underground parking.

Fully renovated in 2014 and immaculately presented throughout, boasting a fantastic curved open plan living area with full height glazing opening to a large wraparound terrace, measuring approx. 646 sq ft, that directly faces the Thames. Polished flooring and sleek kitchen fixtures and finishes help to maximise the feeling of light and space.

This design led attention to detail follows through to the bedrooms and bathrooms which combine contemporary bathroom suites and mirrored storage with stylish tiling. The entire apartment has been equipped with underfloor heating and air conditioning (professional BMS) as well as Control4 Audio/Video System smartphone technology.

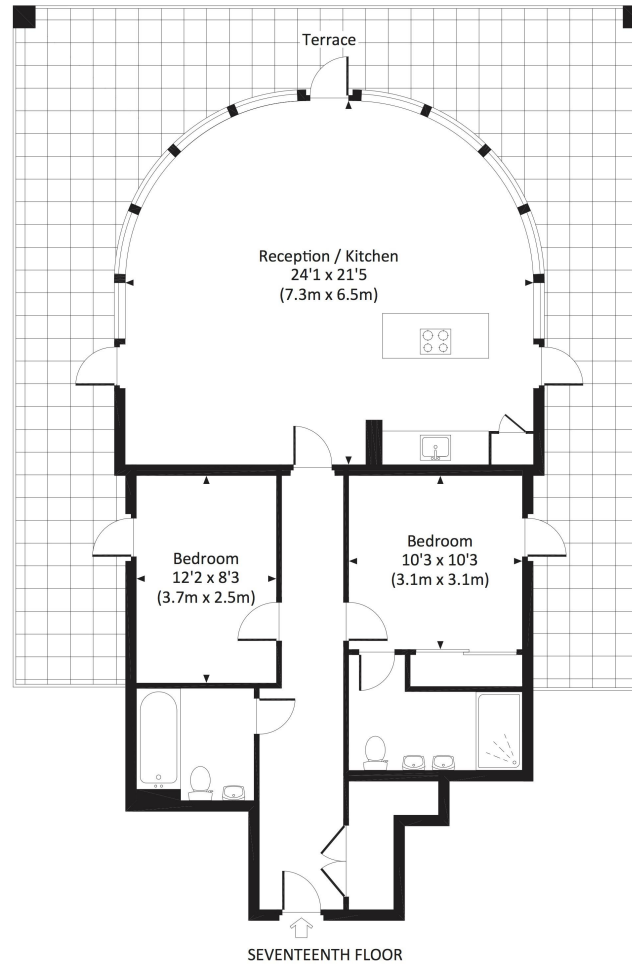
Seacon Tower is a popular gated riverside development offering 24 hour concierge and gym facilities.

- 2 Bedrooms
- 2 Bathroom
- Penthouse apartment
- Wraparound terrace
- Stunning panoramic views
- Secure underground parking
- Residents' gym and 24 hour concierge
- Approx. 969 sq ft (90 sq m)
- Close to DLR stations
- EPC: D



SEACON TOWER, E14

Approx. gross internal area
969 Sq Ft. / 90 Sq M.



All measurements have been made in accordance with RICS Code of Measuring Practice which are approximate only and only for illustrative purposes. For the avoidance of doubt, Dowling Jones Design shall not be liable for any reliance on these measurements. © 2017 www.dowlingjones.com 020 7610 9933

Canary Wharf
11 Westferry Circus,
London E14 4HE
020 7715 9700

Urban living, your way.

jll.co.uk/residential

© 2019 Jones Lang LaSalle IP, Inc. All rights reserved. All information contained herein is from sources deemed reliable; however, no representation or warranty is made to the accuracy thereof.

