

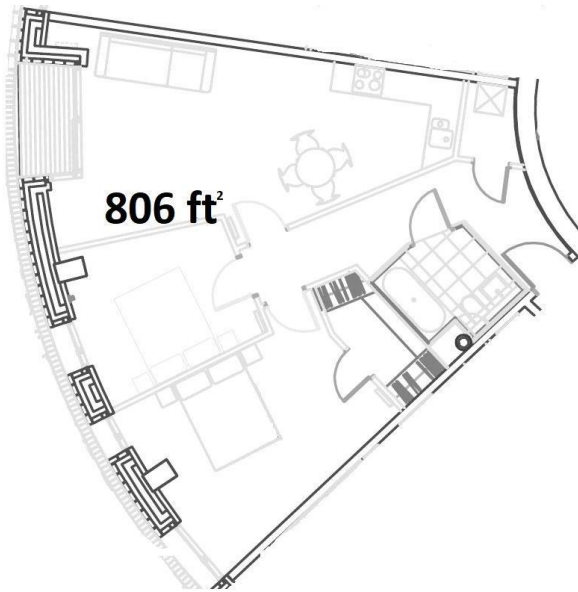


Candle House Leeds LS1

Guide Price £247,500 Leasehold







Description

A two bedroom and two bathroom apartment on the 14th floor of the highly sought after Candle House building, a striking 21 floor cylindrical tower positioned at the edge of the canal and docks.

Leeds train station is only 200 metres from the building and can be accessed via the recently opened southern entrance providing direct access from the development.

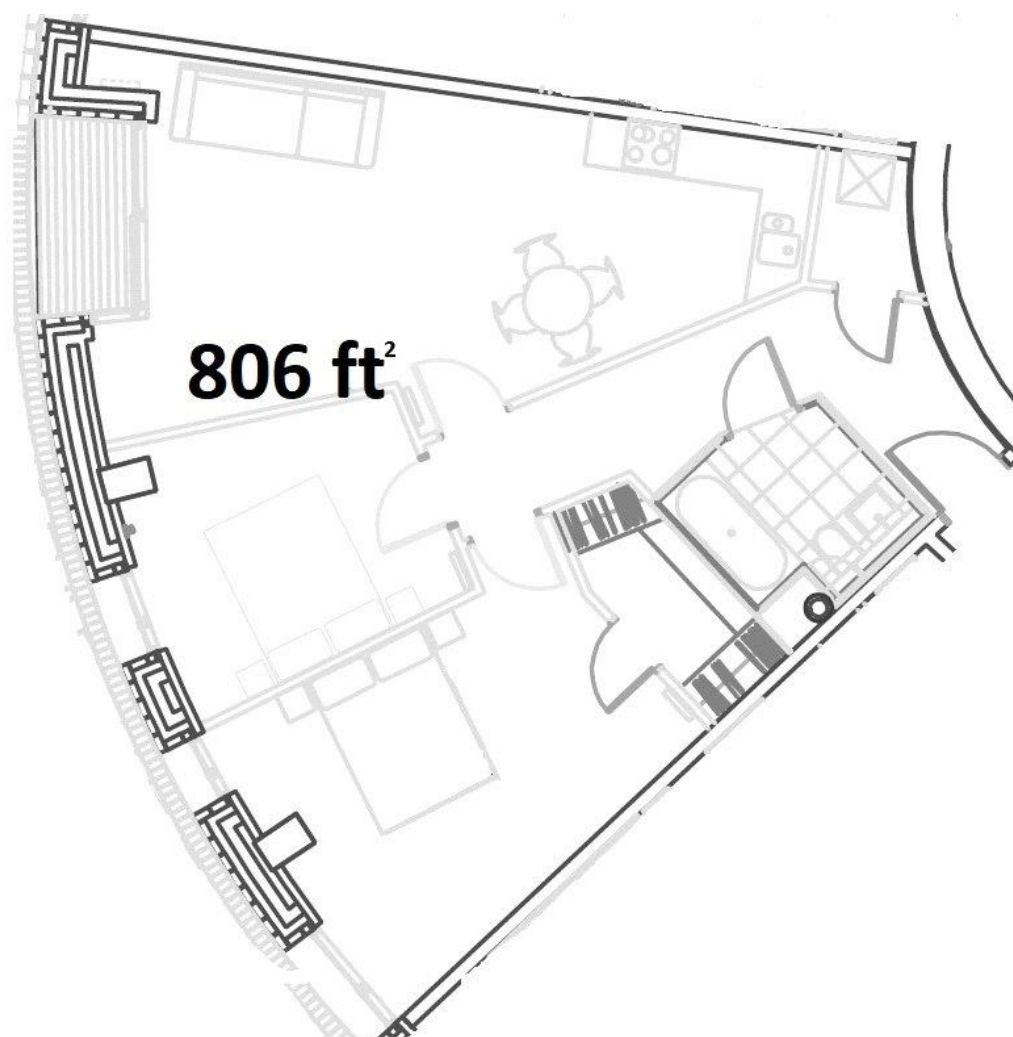
This spacious apartment measures in excess of 800ft. There are floor to ceiling windows throughout offering Southerly views over the canal. The high specification kitchen has granite work tops throughout and NEFF integrated appliances including separate fridge and freezer, integrated dishwasher and microwave. The building also boasts a large communal roof terrace offering spectacular panoramic views of the city.

CURRENTLY LET UNTIL 14TH JAN 2020 at £1200

- 2 Bedrooms
- 2 Bathrooms
- South facing balcony
- River Views
- 14th Floor
- Currently let until 14th Jan 2020
- LS1 Location
- EPC: B

Floorplan

0 sq ft | 0 sq m



Leeds
32 Park Place,
[brAddL2]
0113 205 3333

Urban living, your way.

jll.co.uk/residential

© 2019 Jones Lang LaSalle IP, Inc. All rights reserved. All information contained herein is from sources deemed reliable; however, no representation or warranty is made to the accuracy thereof.

